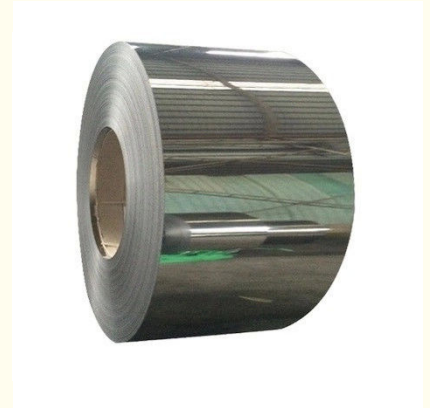


## 430 410 Astm Stainless Steel Coil Sheet 304 SS slit coil 1/2" 0cr18ni19 Decorative

Our Product Introduction

### Basic Information

- Place of Origin: china
- Brand Name: jinshunlai
- Certification: ISO, AISI, ASTM, GB, EN, DIN
- Model Number: 0.1mm-900mm
- Minimum Order Quantity: 1kg
- Price: Contact Us
- Packaging Details: Waterproof Paper, Steel Strip Packed and other Standard Export Seaworthy Package, or customized package
- Delivery Time: 5day
- Payment Terms: L/C, T/T, Western Union
- Supply Ability: 90000ton



### Product Specification

- Application: Construction, Decoration, Industry, Etc.
- Certificate: ISO, SGS, BV, Etc.
- Surface: 2B, BA, HL, No.1, No.4, 8K, Etc.
- Thickness: 0.1mm-6.0mm
- Width: 1000mm-2000mm
- Highlight: **Astm Stainless Steel Coil Sheet,  
430 Stainless Steel Coil Sheet,  
Astm 304 ss slit coil**



for more products please visit us on [copper-solid.com](http://copper-solid.com)

Product Description

KEY ATTRIBUTES

INDUSTRY-SPECIFIC ATTRIBUTES

GRADE	200,300,400 SERIES
TOLERANCE	±1%

OTHER ATTRIBUTES

PLACE OF ORIGIN	SHANDONG, CHINA
TYPE	COLD ROLLED STEEL SHEET
DELIVERY TIME	14 DAYS
STANDARD	AISI, ASTM, BS, DIN, GB, JIS
BRAND NAME	JINSHUNLAI
MODEL NUMBER	200,300,400
TYPE	STEEL COIL
TECHNIQUE	COLD/HOT ROLLED
SURFACE TREATMENT	COATED
APPLICATION	DECORATION, KITCHEN
WIDTH	50-2000MM
PROCESSING SERVICE	BENDING, WELDING, DECOILING, CUTTING, PUNCHING
SURFACE	2B. BA. NO.1
PACKING	STANDARD SEA-WORTHY PACKING
SURFACE FINISH	BA/2B/NO.1
MOQ	3 TONS
THICKNESS	0.3-16MM
SAMPLE	FREELY
PRICE TERM	CIF CFR FOB EX-WORK
TECHNICAL TREATMENT	CODE ROLLED HOT ROLLED
PAYMENT TERM	L/C T/T (30% DEPOSIT)
COLOR	CUSTOMIZABLE

PACKAGING & DELIVERY

PACKAGE TYPE:	STANDARD SEA-WORTHY PACKING
---------------	-----------------------------

SUPPLY ABILITY

SUPPLY ABILITY

1000 TON/TONS PER MONTH

Products Description



**Wuxi Jinnuo copper Co.,Ltd**



+86-17763564398



sales01@shuangheyisteel.com



copper-solid.com

32 Chengnan Road, New District, Wuxi City, Jiangsu Province, China